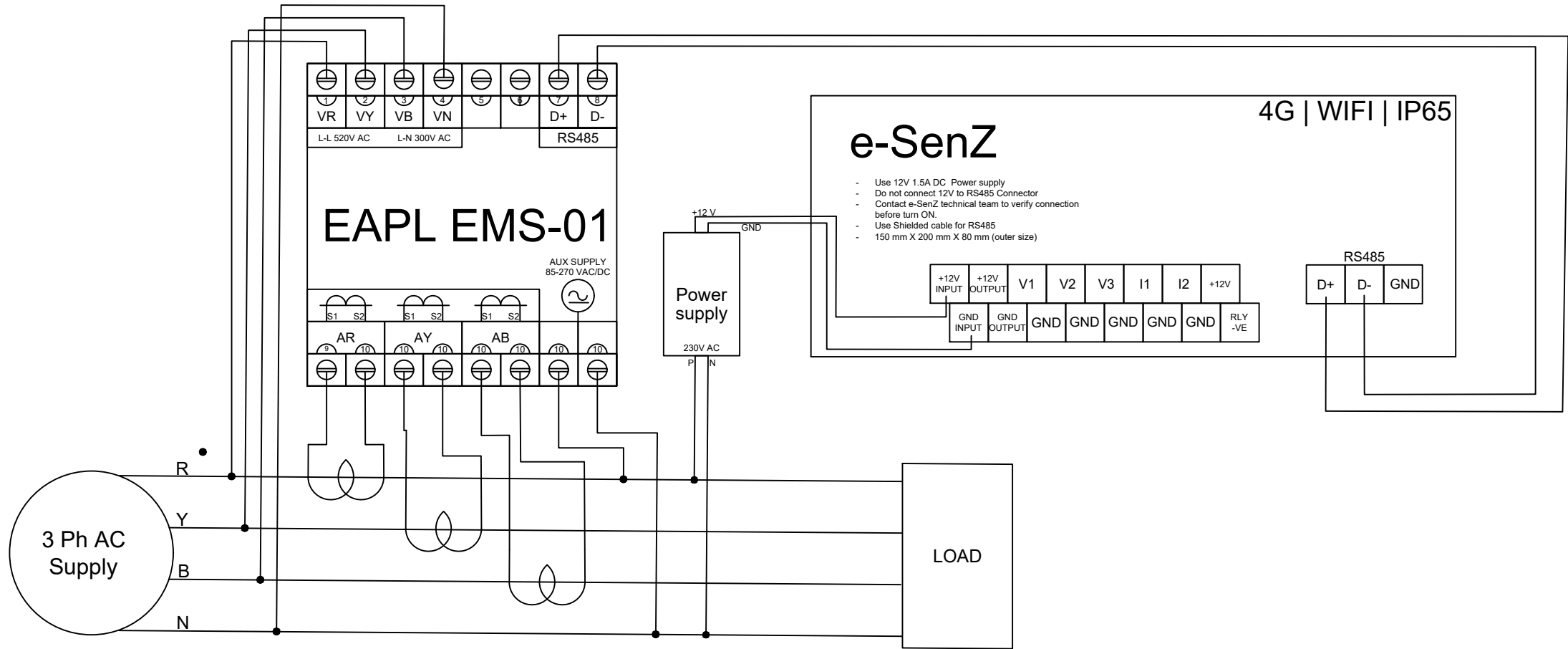


SLD for EnergyMeterConnection-EAPL

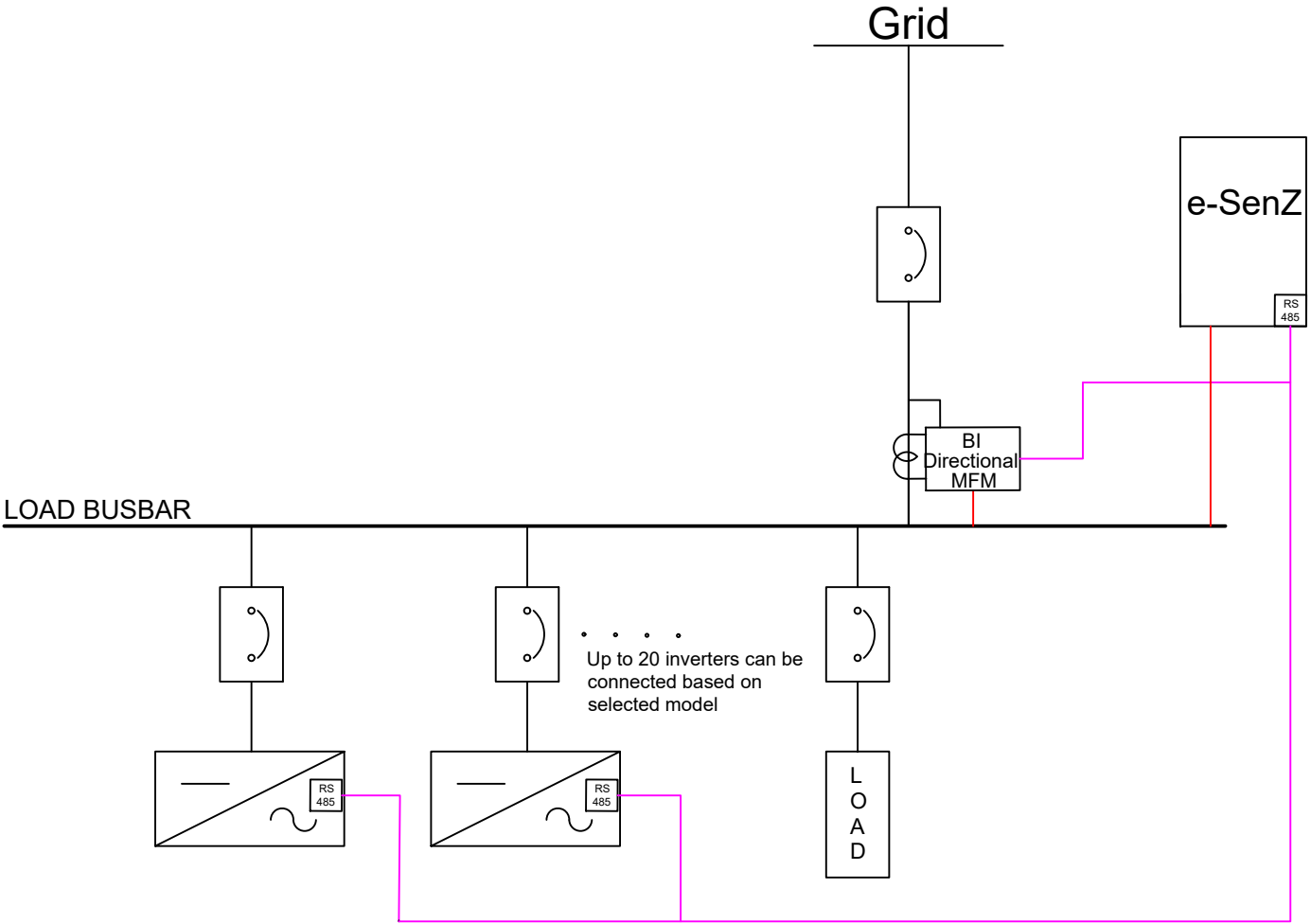


3 Phase Energy Meter Wiring Diagram & e-SenZ connection

ESENZ INNOVATIONS PVT LTD
Bangalore | 9916195977

Prepared by	Satish K G	REV
Approved by		1.0

SLD for Zero Export

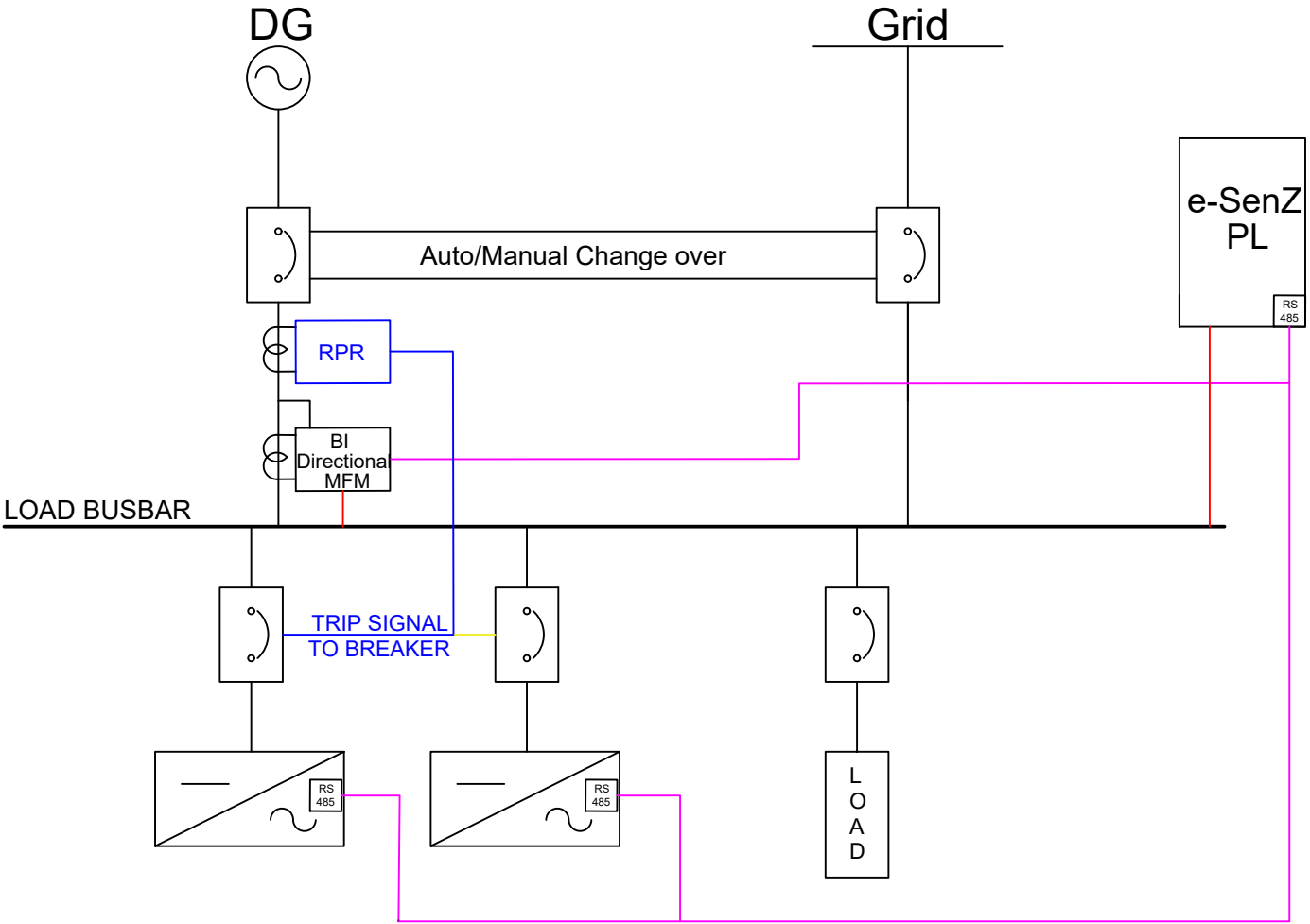


Note :

- Use Shielded cable for RS485 Line to avoid electrical noise.
- extend the RS485 Range beyond 600mts.
- A RPR for Additional Safety is recommended for the reverse power

SLD for Zero Export		
ESENZ INNOVATIONS PVT LTD Bangalore 9986495977		
Prepared by	Satish K G	REV
Approved by		1.0

SLD for DG Sync



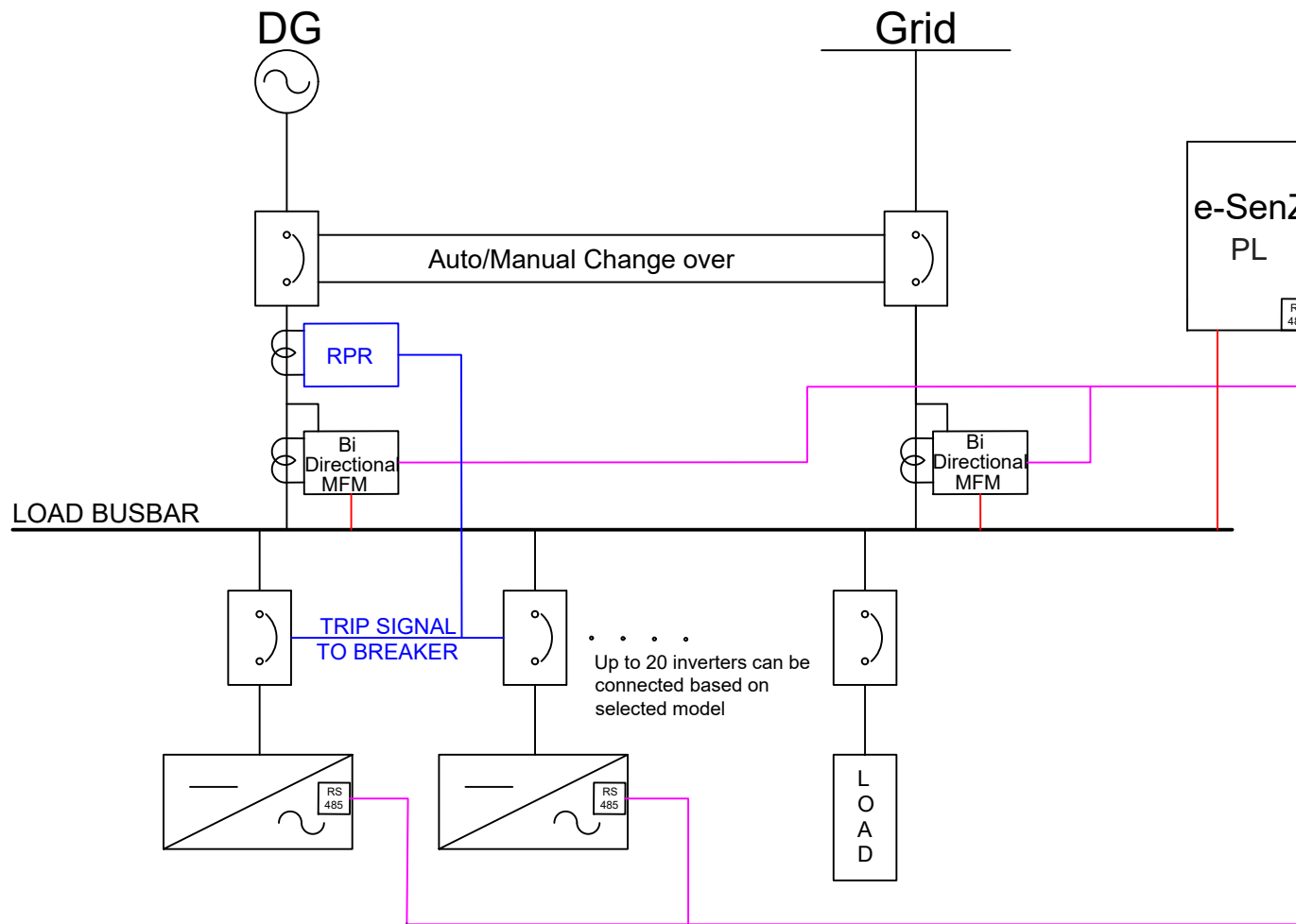
Note :

- All MFM and e-SenZ should be powered from Load Line (Should always get power)
- Use Shielded cable for RS485 Line to avoid electrical noise.
- RS485 Repeater can be used to extend the RS485 Range beyond 600mts.
- RPR is advisable for DG Sync as it provides back up protection in case
- If Solar Inverter have a common breaker then RPR signal can be given to it.
- Solar Should be terminated at the Load Side

RS485 line RPR Section Power supply

SLD for DG Sync		
ESENZ INNOVATIONS PVT LTD Bangalore 9886434160		
Prepared by	Satish K G	REV
Approved by		1.0

SLD for ZeroExport and DG Sync



Note :

- All MFM and e-SenZ should be powered from Load Line (Should always get power)
- Use Shielded cable for RS485 Line to avoid electrical noise.
- RS485 Repeater can be used to extend the RS485 Range beyond 600mts.
- RPR is advisable at Site, as it provides back up protection in case of system failure.
- If Solar Inverter have a common breaker then RPR signal can be given to it.

RS485 line

RPR Section

Power supply

SLD for Zero Export & DG Sync		
ESENZ INNOVATIONS PVT LTD Bangalore 9886434160		
Prepared by	Satish K G	REV
Approved by		1.0