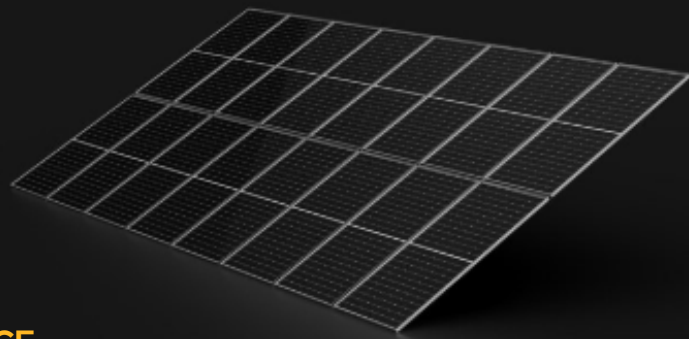


ESENZ INNOVATIONS PVT LTD

DRIVEN BY INNOVATION. TRUSTED FOR PERFORMANCE.

e-SenZ™



SOLUTIONS WE OFFER



Data Loggers



PV_DG Sync



Zero Export



OFC solutions



Weather sensors



Wireless -RS485

DATA SHEET

SIGNAL CONVERTER

TCP-IP TO RS485 CONVERTER



MES ring rd, Bengaluru, Karnataka



www.esenzinnovations.com



9986495977, 9738367426



sales@esenzinnovations.com

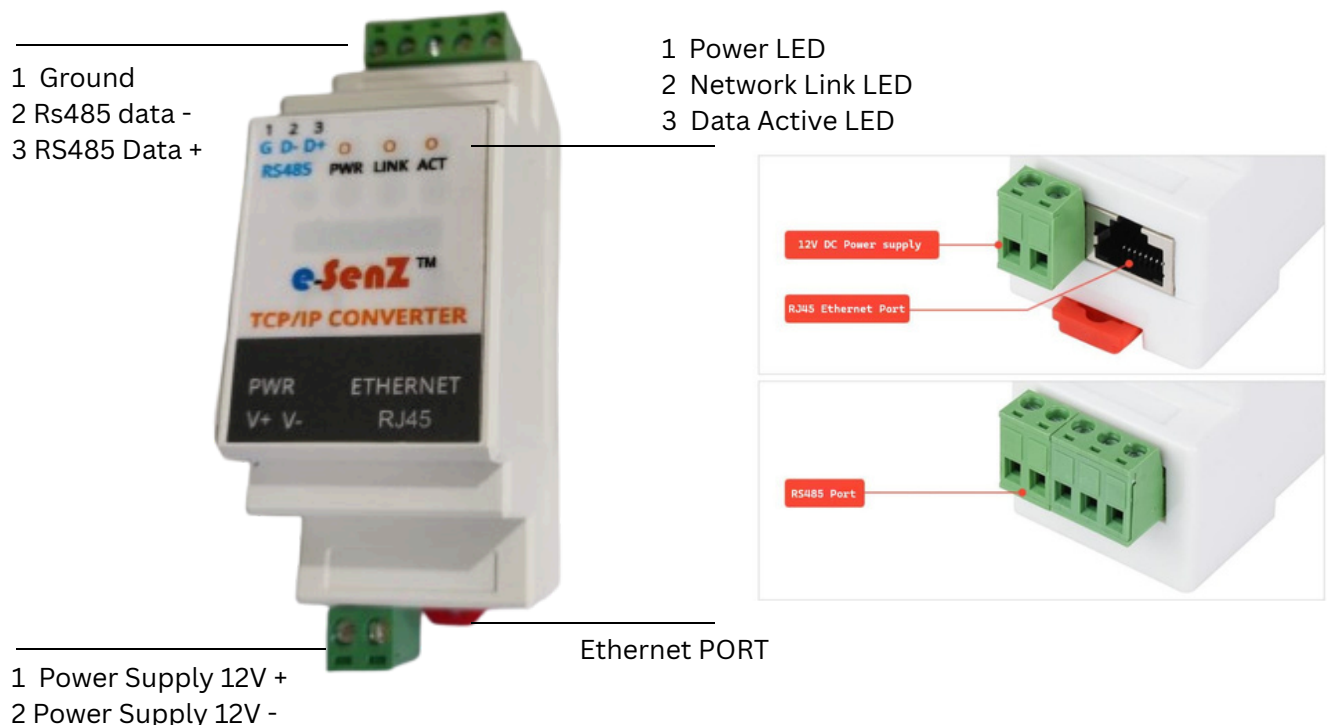
SIGNAL CONVERTER TCP-IP to RS485

The Esenz TCP/IP to RS485 Converter enables seamless communication between Ethernet-based systems and RS485 serial devices. It is ideal for industrial automation, energy monitoring, and remote device control applications

Features

- Converts Modbus TCP/IP to Modbus RTU over RS485
- Supports static IP and DHCP modes
- Up to 32 RS485 slave devices supported
- Built-in surge and ESD protection
- Compact DIN-rail mountable design
- LED indicators for power, Ethernet link, and RS485 activity

HARDWARE SPECIFICATIONS



Parameter	Specification
Power Supply	12V DC / 1A (external adapter)
Ethernet Interface	RJ-45, 10/100 Mbps
Serial Interface	RS485, 2-wire
Protocol Support	Modbus TCP/IP, Modbus RTU
Baud Rate	9600 to 115200 bps (configurable)
Max Devices (RS485)	32
Operating Temperature	0°C to 50°C
Dimensions	91 × 91 × 37 mm
Mounting	DIN rail or panel mount

Wiring & Installation

RS485 Connection

A → RS485+
 B → RS485-
 GND → Signal Ground (optional)

Ethernet Connection

Connect to router/switch using standard Cat5e/Cat6 cable
 DHCP mode by default; static IP configurable via web interface

Configuration

Access the device via its IP address using a browser. Default settings:

IP: 192.168.1.100
 Subnet: 255.255.255.0
 Gateway: 192.168.1.1

Login to the web interface to:

Set static IP or enable DHCP
 Configure Modbus parameters
 Monitor RS485 traffic

Troubleshooting

No Ethernet link: Check cable and switch/router port
No RS485 response: Verify baud rate and wiring polarity
Device not found: Use network scanner or reset to default IP

